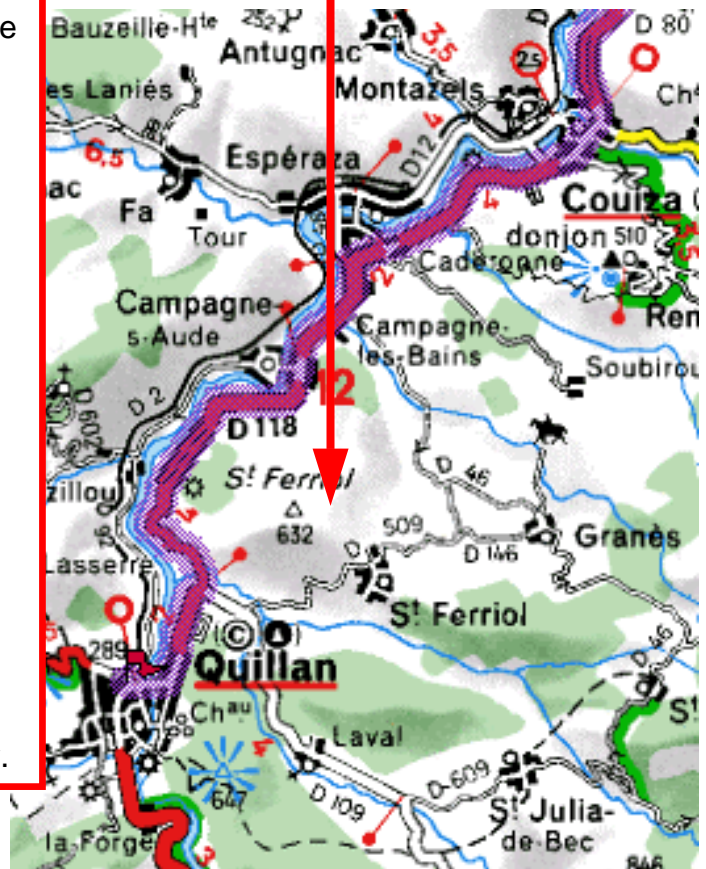
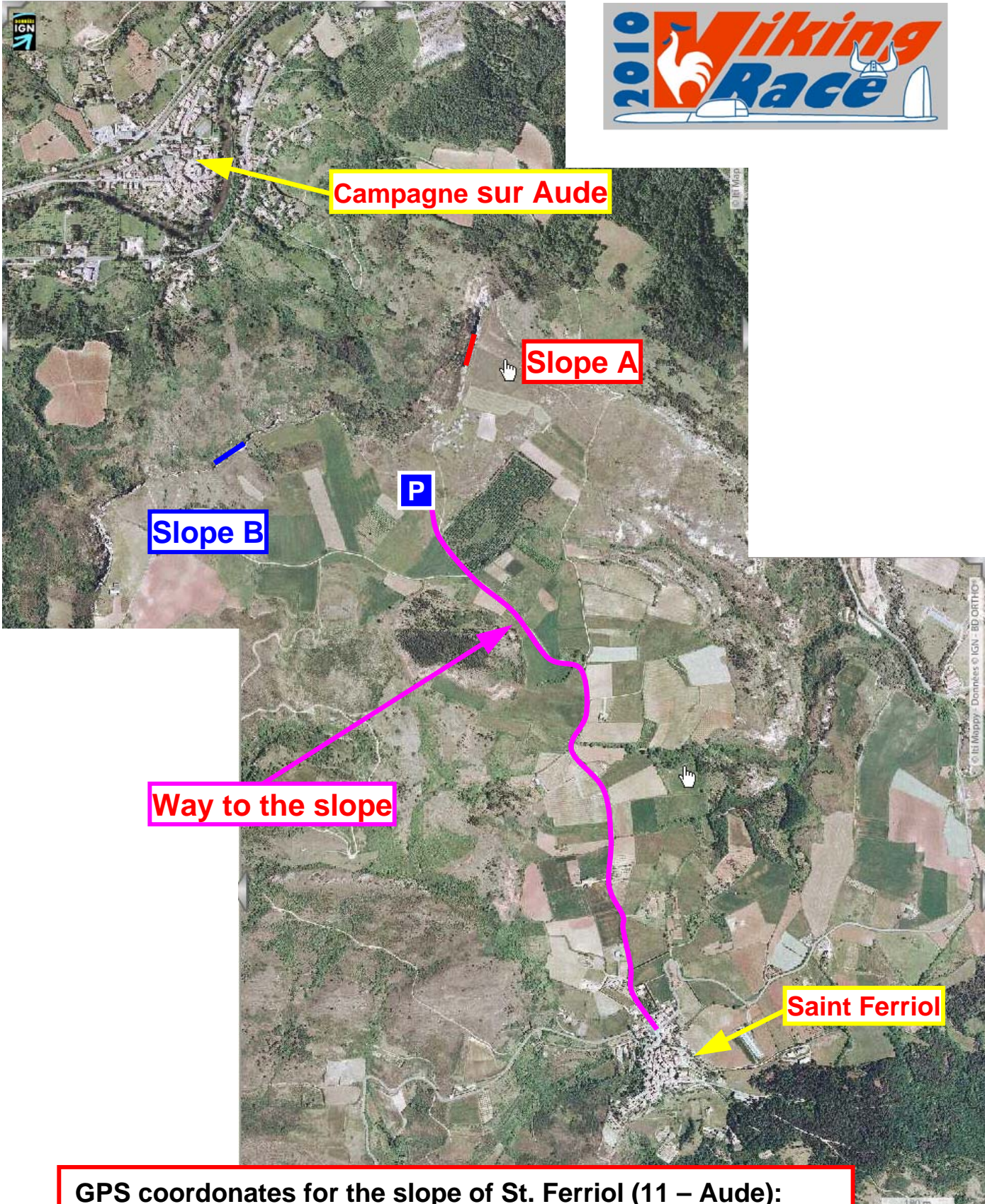


The slope of St. Ferriol

- On the autoroute A61 (Toulouse – Narbonne leave exit No 22 (**Bram**))
- After the toll station turn two times right in direction of **Limoux**
- Pass through **Limoux** and **Couiza** and head towards **Quillan**
- After having passed **Espérazza**, take left for direction of **St. Ferriol/Granes** (it is a tricky left turn, where you go at first right hand in order to cross safely over the road)
- Continue to **St. Ferriol** and once arrived in the middle of the small town, turn directly right hand and follow the description on the enclosed satellite picture.
- On the farmers road (built with concrete), drive a distance of approx. 1.5km and turn right on a farmers way built of gravel
- After approx. 400m, turn left hand and continue your way to the parking and HQ area. Dedicated signs will indicate your way.



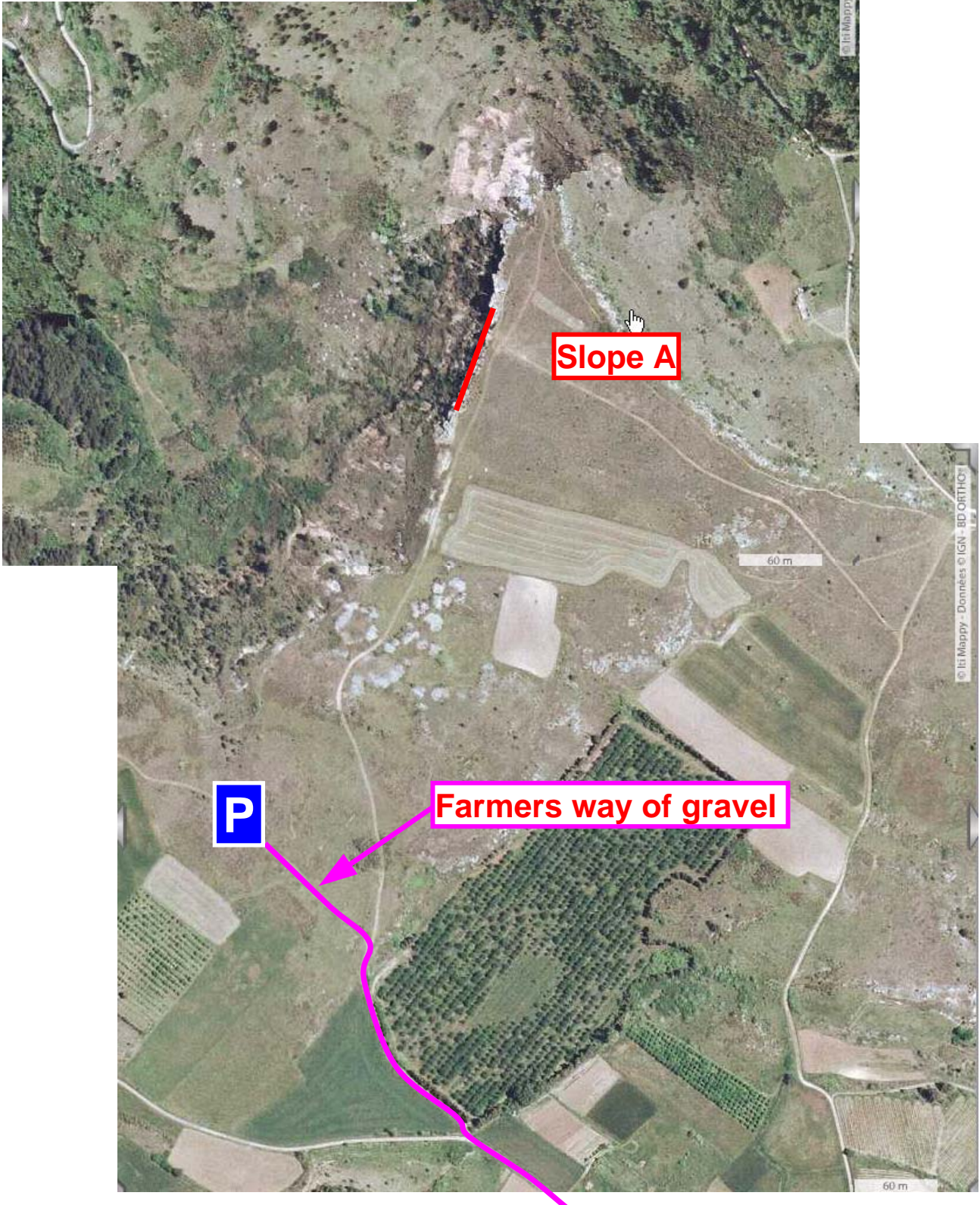




**GPS coordonates for the slope of St. Ferriol (11 – Aude):
Longitude : 42.90942 Latitude : 2.21656**



Slope A



P

Farmers way of gravel